


BLACKBERRY PRESERVES

The Journal of the

KIRKLAND HERITAGE SOCIETY

<p>Compliments of GRIFFITH DAIRY Dial 406 or Black 432</p>	 <p>KIRKLAND FUNERAL HOME JAMES C. BLEITZ Phone MAIN 155</p>
<p>KIRKLAND CASH MARKET CARL GOLDAPP Quality Meats—Fresh Fish—Poultry At Reasonable Prices Phone Black 251</p>	<p>ROSS the CLEANER Phone Red 51 All Kinds of Dressmaking and Alterations "LET ROSS CLEAN IT"</p>
<p>LAKESIDE SERVICE STATION UNION OIL PRODUCTS Phone MAIN 164</p>	<p>KIRKLAND CASH FEED STORE (Opposite Gateway Theatre) Poultry, Rabbit, Dairy, Feeds and Supplies Coal—Flour—Hay MAIN 128</p>
<p>Compliments of KIRKLAND HARDWARE CO. Phone MAIN 10</p>	<p>RED WHITE AND BLUE LUMBER COMPANY LUMBER and BUILDING MATERIAL Phone MAIN 168</p>
<p>For Quality Floral Service PINES FLORAL CO. C. H. BENSON Cut Flowers, Potted Plants, Floral Designs Phone Black 532</p>	<p>Philco Radio, Maytag Washers and Ironer Norge Electric Refrigerators, Radio Service BARTSCH RADIO and TELEVISION COMPANY House Phone Black 1131, Store Phone Black 912 Gateway Theatre Building Phone MAIN 100</p>
<p>"Look Your Best" ROSE BEAUTY SHOPPE All Kinds of Beauty Work and Permanent Waving Also a Complete Line of Esprit d'Amour Exquisite Toiletries Phone Black 51—906 Evenings</p>	<p>KIRKLAND HOSPITAL AMBULANCE SERVICE Open to All Physicians</p>
<p>KIRKLAND MERCANTILE CO. A PRICE RITE STORE Groceries, Fruits and Vegetables Phone MAIN 12</p>	<p>KIRKLAND PHARMACY As Close to You as Your Phone MAIN 110 Registered Pharmacist Courteous, Dependable, Service</p>
<p>Compliments of LAKE WASHINGTON TELEPHONE COMPANY</p>	<p>Office Phone Black 481 Residence Phone Lakeside 266-J DR. J. C. THOMPSON DENTIST 205 First National Bank Building</p>
<p>BROWN'S TOGGERY The Home Owned Store</p>	

Katherine Marsh from the Marsh Mansion saved St. John's church service bulletins. This directory was printed on the back of a depression era bulletin.

From the President

Loita Hawkinson

Dear all,

The collections held by Kirkland Heritage Society are growing. As people are housebound, they have time to sort and clear out and find homes for their memorabilia. The mail is exciting. As you know, KHS is interested in all things "Kirkland". In some ways we are like the Smithsonian....an attic full of memories....sort of like a scrapbook. Those are the items are in the database and also displayed...wherever we can find room. And then we are like the National Archives....historic through and through. Those items are in the database for research and then archived for safe keeping.

This issue is going to show just a few of the hundreds of items that have been added to the database in 2020. As of this issue in 2020, KHS has received 34 collections from new donors. Some donations are a single item while others are dozens of items or photos. In 2019, KHS added 12 new donors. This gives you some idea of the new activity. And of course, there are hundreds of new items being added to the established collections.

There are collections archived that have not been processed. These collections came in during the Centennial...15 years ago. Because of Covid 19, time is more abundant to work on the database. A nice dent has been made in these collections.

Then the "icing on the cake" is that his history is being put to use. The City and Chamber now have frequent requests for history. The Parks Department recently held a Historic Scavenger Hunt and the Chamber of Commerce is establishing an Education Scholarship. They need proof that the Chamber has been serving Kirkland for 100 years. That proof is in the KHS archives. And they need to establish that Kirkland has always put education and schools first.

Again, KHS has that proof. A 501C3 nonprofit status has many requirements. It is with pride that KHS, who is a 501C3, can help the Chamber with their scholarship mission.

Nancy Landguth Bock is friends with Dean Everson who is the grandson of Fred and Ruth Lott. Fred and Ruth owned Eastside Battery and Lottsville Cash and Carry on Rose Hill. People have such fond memories of both sides of the business. Fred was a source for car parts and could lay his hand on the exact part needed in his "sea of parts". Ruth was the source for treats and last minute dinner items...the original convenience store. Nancy borrowed Dean's collection of photos and scanned them at a high resolution. She then emailed the photos to me, one at a time, with the history and dates. My end was to copy all the data and photos into the database and make prints of the photos to be archived. Nancy did all the real work. Nancy then returned the original photos to Dean. There are two Lott photos in this issue.

Frank and I earned a "needs improvement" for mailing the last issue of *Blackberry Preserves*. A thick stack, neatly bound in string, came back with the top issue marked "insufficient postage". They slipped through our process with no postage at all.

Not much more to report at this time. Covid 19 is in charge and we are doing the best we can to uphold our mission to identify historic resources; to encourage their preservation; to collect, preserve, exhibit and interpret the history and heritage of Kirkland and its people; and to promote public involvement in and appreciation of its heritage and cultures. So far, all are being met. We are even open by appointment for research.

Take care and stay well dear members and community.

Loita

In the mail

April 20, 2020

In 1935 I would have been 13 and just the right age for Mrs. Esty's Cub Scout group. Mrs. Esty was a brave lady.

She gave a parent's program in which 10 or 12 of us stood behind a four foot high curtain with shoes and socks on our hands. So on the signal we all ducked down, put our hands above the curtain - looked like we were doing a hand stand. Also she, Mrs. Esty, took a group of us to the Cub Scout Campout (one day) for games and competition. I think that was at Woodland Park.

In later years when I was a Boy Scout I ran a Cub Pack. We met in the basement at Shumway's. Mrs. Shumway always had cookies and a drink.

E.A. Brooks, my Grandfather, was having some problem with break-ins in the store. The back half of this building was divided by a wall and in the rear half of the building were stacks of flour and feed of all kinds. Literally thousands. Approximately 40' x 40' x 6' high. On top of this and behind the wall Grandpa Brooks cut a hole in the wall so he could see the store and front door. And on the front door he put a sign - "I'm here two nights a week watching and waiting - you guess which nights". He had no more break-ins.

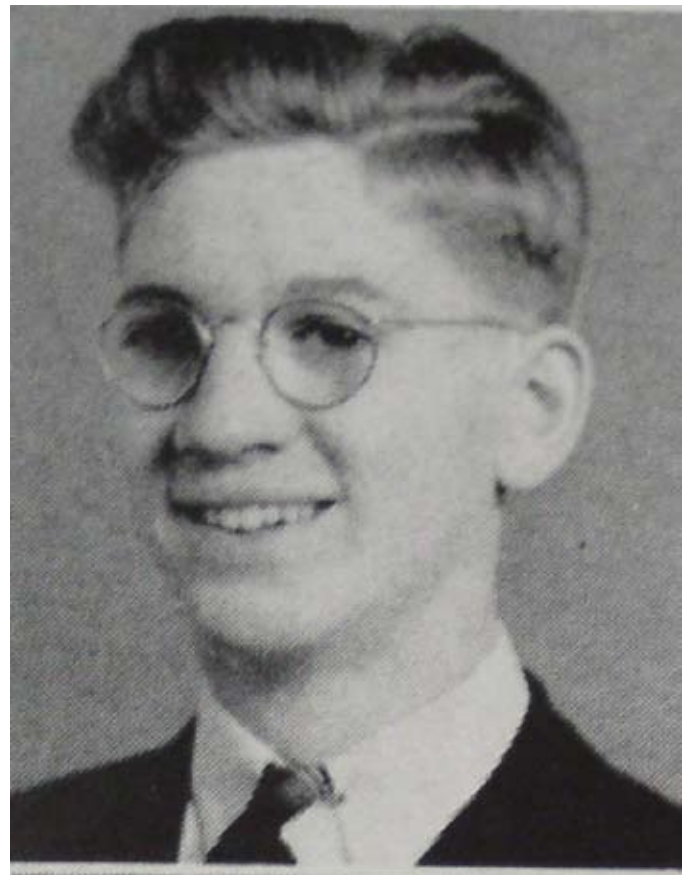
My Uncle Henry, son of E.A. Brooks, had a farm at Gold Bar. Several times a year the whole family would pack up and drive to Gold Bar. Roads were awful. Rocky, not gravel. Tires were not great. I seem to recall we always had one flat tire, especially on Grandpa Brooks big "Mitchell" car. About 10 or 12 of us kids had a special good time - we got to sleep in the hayloft.

I'm sure you are overloaded with stories and histories from Kirkland folks but I enjoyed sharing this little bit.


Ted Tillman.



Ted is in front row, far left.



Ted was in the Kirkland High School class of 1941. He was a Kangaroo. "Kangs" came about much later.

U.S. KALAKALA		W.H. MANGAN MASTER
DINNER*****60¢		60¢*****DINNER
PUGET SOUND NAVIGATION COMPANY		
BLACK BALL LINE		
SOUP		
CHICKEN BROTH WITH RICE		
SALAD		
STRING BEAN		
CHOICE OF:		
FRIED PACIFIC OYSTERS		
FILLET OF HALIBUT TARTAR SAUCE		
GRILLED SALMON OR HALIBUT		
ROAST VEAL, CELERY DRESSING		
GRILLED PORK CHOPS, COUNTRY GRAVY		
FRIED SWEET POTATOS AND BACON		
HUNGARIAN GOULOSH, NOODLES		
AMERICAN CHINESE OMELETTE		
POTATOES	DESSERT	VEGETABLE
COFFEE	TEA	MILK

A LA CARTE		
CRAB OR SHRIMP COCKTAIL.....	35	
CRAB, SHRIMP OR TUNA SALAD.....	40	
T-BONE STEAK, FRENCH FRIES.....	35	
TOP SIRLOIN STEAK, FRENCH FRIES.....	75	
CLUB STEAK, FRENCH FRIES.....	65	
LAMB CHOPS.....	85	PORK CHOPS.....60
LIVER AND BACON.....	50	HAM OMELETTE.....50
TENDERLOIN STEAK SANDWICH ON TOAST.....	55	
HOT BEEF, PORK OR HAM SANDWICH.....	35	
OYSTER SANDWICH.....	35	
HAMBURGERS DE LUXE.....	20	
ICE CREAM AND COOKIE.....	10	
DATE	STEWARD	CHEF
6-31-38		VINCENT

Bonnie Rae sent KHS a menu that her mother saved from a 1938 cruise on the Kalakala. The depression era prices are interesting. If you had most any job, you could live well. But like now, many did not have jobs and there were few safety nets. A copy of this menu is displayed with the original archived.



Programs

Karen would like suggestions for future programs:

Karen Schickling @ 425-273-6299 or
kschic1965@gmail.com.



Golden Grads 2020

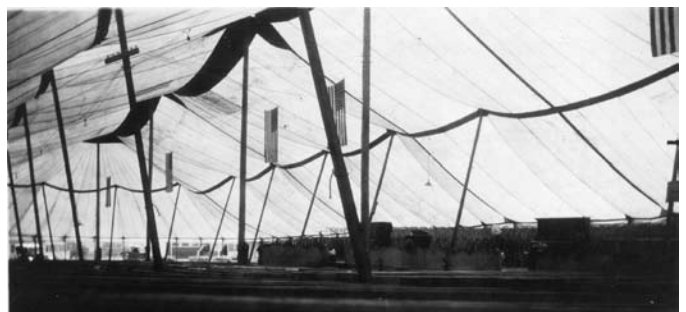
See you next year.



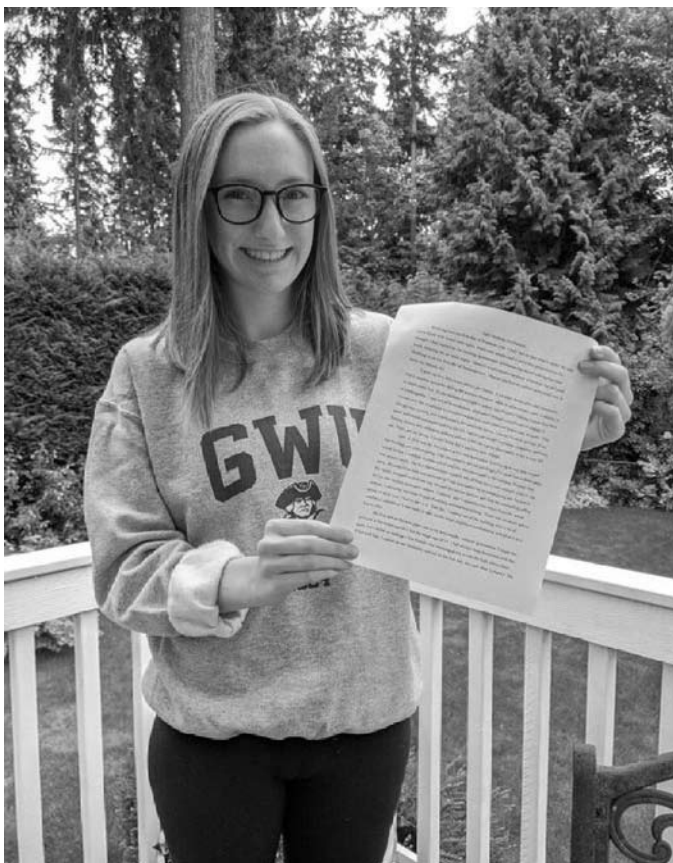
Tracy Roberts Eickhoff's family lived at 1201 Market. The family collection has been loaned for scanning with the originals remaining in their family. This photo is from about 1933. The house is still on Market Street. It is now a business.



Lottsville Cash & Carry
on Rose Hill



Dale Townsend sent this photo taken by his mother in 1921. Aimee Semple McPherson held tent revivals in Kirkland. The tent was on Market Street. McPherson is credited for starting the Foursquare Church and being the first to use radio to broadcast her sermons.



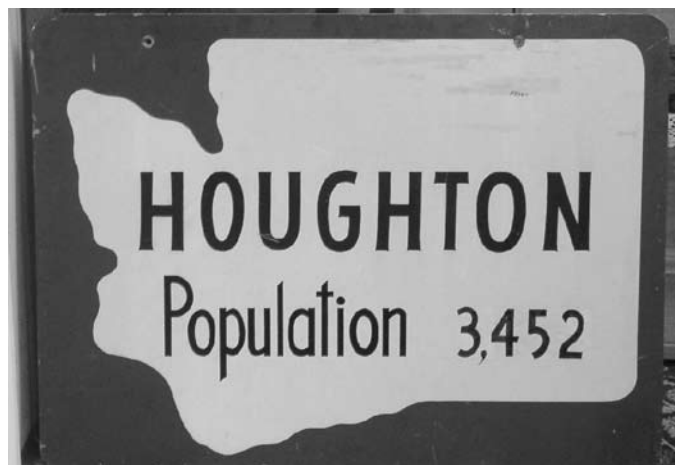
Sarah Freeman is the 2020 Robert and Christine Neir Scholarship recipient. Her \$2,000 award has been sent to the George Washington University. Congratulations Sarah.



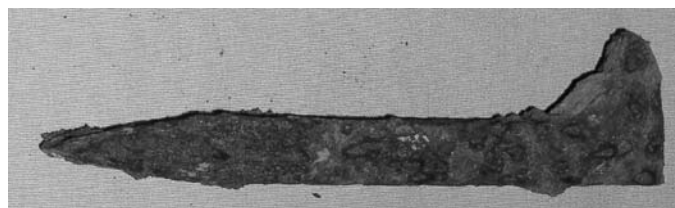
Lee Johnson Chevrolet displayed these two banners of support of our two Kirkland High Schools. Hope they have been saved to display at future reunions and at Golden Grads in 2070.

Paver update

There has been a complete change of employees at the paver company and therefore confusion. We got our order but they were ceramic tiles. So we are waiting for the resolution. The tiles are beautiful but they are not what we ordered and will not work. So stay tuned.



Jack Pruss was Houghton Mayor when Kirkland and Houghton consolidated in 1968. The former mayor salvaged this historic sign and it now is on the wall at KHS.



David and Anna Aubry live near Slater and the old Kirk era railroad line that was to service the Steel Mill. David found a spike that he has donated. These spikes would have been salvaged when the rail was pulled up and the railroad bed graveled to become Slater. The spikes would have been abundant but this could be the only survivor. The spike is displayed with a spike that was salvaged when the Cross Kirkland Corridor was first being developed.

Blackberry Preserves

President:	Loita Hawkinson	425 827-1950
Vice-president	Karen Schickling	425.827-3446
Secretary:	Janice Gerrish	425.827-3446
Treasurer:	Frank Rosin	425 827-3446
At-Large	Linda Jatton	425 827-3446
At-Large	Vic Newhard	425 892-8388
At-Large	Lynette Weber	425 890-9058
At-Large:	Dave Sherbrooke	425 827-3446
At-Large:	Shannon Harris	425-827-3446

Committee Chairs & members

Archives & Collections:	Loita Hawkinson* Libbi Wright	425 827-1950 425-827-3446
Bookkeeping	Andrea Kyralla	425-827-3446
Blackberry Preserves:	Loita Hawkinson Marjorie Denton	425 827-1950
Cemetery Tour & Memorial	Matt McCauley* Sue Contreras Frank Rosin Loita Hawkinson	425.827.3446
Hello Girls**	Linda Jatton* Cathy Radcliff Margie Denton Marilyn Johnson	425 827-3446
Feature Writers	Loita Hawkinson Frank Rosin Guest writer	425 827-1950
Programs:	Karen Schickling	425 827-3446
Time Keepers	Marin Harris* Shannon Harris	425-827-3446
Membership	Bob Gerrish	425-827-3446
Oral History:	Loita Hawkinson	425 827-1950
Planning and Historic Sites:	Kim Hartman* Lynette Weber	810.599.1754 425 890-9058
Scholarship Committee	Jim Neir*	206 478-3173 425 827-3446

* Chair or Co-chairs

** During WWI, the Hello Girls were ladies who served as telephone operators. For KHS, these sweet ladies call and remind you of the next meeting or event.

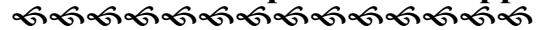
Webmaster: Christopher Neir

Kirkland Heritage Society

www.kirklandheritage.org

425-827-3446

**KHS is 100% volunteer with no paid staff.
Your memberships make it happen.**



2020 MEMBERSHIP

Kirkland Heritage Society

January 1, 2020 to December 31, 2020

KHS qualifies for tax exemption under 501(c) (3) and your contribution is deductible to the extent allowed by law. We qualify for matching gift contributions by those employers who offer this benefit.

Membership Category

_____ Senior / Student	\$20
_____ Individual	\$25
_____ Family	\$30
_____ Supporting	\$100
_____ Life Member	\$1,000
_____ Organization/Government	\$100
_____ Professional Business	\$125
_____ Corporate	\$250

I would like to make a contribution: _____

TOTAL ENCLOSED:

**If your company matches contributions, please
provide the signed Matching Gift Form!**

Name _____

Address: _____

City: _____ State: _____ Zip: _____

Phone: _____

E-mail: _____

Checks should be made payable and mailed to:

Kirkland Heritage Society
Heritage Hall, Lower Level
203 Market Street
Kirkland, WA 98033.



TO RENT HERITAGE HALL

**Call the City of Kirkland's
Customer Service Division at:
425-587-3300**



This sign pointed the way to Fred Lott's East Side Battery on Rose Hill.

Blackberry Preserves is produced by the **Kirkland Heritage Society**, for KHS members and those interested in Kirkland's past. **Loita Hawkinson, Editor.**
For information on KHS - visit our website: www.kirklandheritage.org,
or call 425 827-3446 to leave a message.

**First
Class
Stamp
Box**



Kirkland Heritage Society, est 1977
Heritage Hall
203 Market Street, Lower Level
Kirkland, WA 98033

