

BLACKBERRY PRESERVES

The Journal of the

KIRKLAND HERITAGE SOCIETY



Nathan and Connor, Visitors at Kirkland Heritage, Summer 2021

From the President

Frank Rosin

Every other month, about, when the *Blackberry Preserves* is ready a copy is e-mailed to Keri and Secord Printing in the Totem Lake Area of Kirkland. A day or so later in the morning the printed copies are ready and waiting outside the printing facility. I pick them up on my way to Kirkland Heritage where we do the folding and attaching the postage stamps.

Since it is on the way I stop at Don Schmidt's home and pick him up. There is no need for both of us to be driving a car downtown to our Kirkland Heritage facility. It will now be about 9:30 on that morning.

Loita Hawkinson and Libbi Wright will usually be there about that same time. Libbi of course is only in Kirkland six months every year and is a wonderful doing much needed sorting and filing an unending amount of heritage documents arriving and waiting at Kirkland Heritage, often there every day, during those days she is in Kirkland.

The first thing Don Schmidt does is to count out the 266 copies of *Blackberry Preserves* that we will be mailing out. We both begin folding each of the copies in half so they can be ready for address labels and postage stamps.

Loita and Libbi put on the bottom and side stickers the Post Office requires for mailing and we all put on the Postage and Address Labels. It only takes one of the 'Forever Stamps' for our mailing so purchase a whole year worth of them at the beginning of each season. Those 'Forever Stamps' have saved KHS a little funds each year as the postal rates have increased. Besides we try to get stamps that match the season for the time each of the newsletters are mailed.

We are usually done by about 1:00 in the afternoon and Loita drops the completed newsletters in the mail. I can go home and drop Don Schmidt off at his home on my way home. I make one more stop. Madison House is one of our Corporate Members. I take a handful of the

newsletters and drop them off, leaving them with the receptionist at the front desk at the entrance lobby.

When I gave the handful to the receptionist the previous issue I was told one of our biggest Kirkland Heritage fans was sitting right over across the lobby. I was able to take the issue right off the press and hand it directly to the lady who was chatting with some of the other Madison House residents.

I recognized her right away, she was one of the folks that often come to the Golden Grads, Marjorie Schultz. She graduated from Kirkland High School in 1942 and I often try to talk to her a bit at those annual events.

The last year at Golden Grads before the Virus I asked her if she remembered Bill Killgore who was slated to graduate in 1942 the same year with her. The answer was, 'Oh Yes, he was the popular, handsome, fellow and football player that worked in the Paint Factory.'

Well, it was the Paint Factory that was owned and operated by my family. Bill Kilgore was from Juanita and was one of the guys that led the Kirkland Team to the Football League Championship that year. Talking to some of the other Grads those years, they all thought he was a really handsome fellow and wanted to get to know him better.

We were rather young in the early days of 1939 but did see him play one of the games. Our mother did take us to see him on the Waverly Way football field and make one of



Life Members:

Richard and Lisa Altig, Maureen Baskin, Laura Bradley-Pierucci, Bob and Valerie Burmester, David and Tasha Davis, Steve Lamson, Ray & Clare Lincoln, Matt McCauley, Laura May Mosing, Richard and Kathy Nelson, Michael and Cathy Radcliff, Larry Springer/Penny Sweet, Sandi Stone, Laura Westlund.

Corporate Members:

Hallmark Realty, Madison House.

his Touchdowns. It was at the far end of the field from where we were sitting, we did see his touchdown even though a little far away.

Bill had indeed worked in our Paint Factory after school and did sit with us boys after he got home from school many times. One of our treats was for him to row us over to the ferry dock and walk up to Halverson's Pharmacy and get an ice cream cone at their soda fountain for all three of us. Since he couldn't eat his ice cream cone and row back at the same time, we got to share most of his cone on the way home.

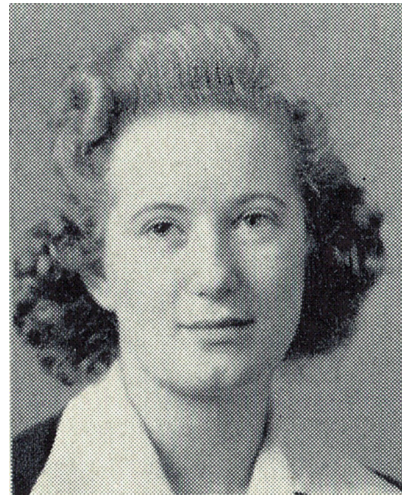


He was a good friend and died suddenly of a ruptured appendix in July of 1940. His Number '5' was not used for another football player in Kirkland for many years in his memory.

As much as he loved football, it turns out he is buried in the Kirkland Cemetery directly across the street from the Lake Washington High School on the 50 yard line of the Football Field.

Bill Kilgore 1939 Reville Kirkland High School Annual

Since February of 2020 with the unwelcome arrival of the Covid Virus, most activity of necessity has not been able to be scheduled. Following State of Washington Mandates in a guarded way we are open on the regular Monday and Wednesday hours. We have been open for a few other appointments but no other scheduled events have been held or are scheduled. The Monday and Wednesday openings are subject to rules from the State of Washington and the City of Kirkland, so far we are not going ahead with any other activities. Much depends on the unknown impact month by month of the Covid for 2022.



Marjorie Schultz 1942 Reville Kirkland High School Annual



Something New

We are running out of space for displays but seem to be able to get many items out on display when when they are obtained and are about something in the History of Kirkland. Just because something is old and we don't have it does not mean we want it. All the objects with very few exceptions we decline items that do not have relationship with Kirkland.



KHS receives 100% commission from the sales of Bob Neir's *A City Comes of Age* and Steve Lamson's *The Power of a Dream*.



On the Cover, Six and a half year old Nathan and Connor, visiting Kirkland Heritage, using the 1922 Underwood Typewriter purchased by the Kirkland Union A High School for typing classes and used until 1954 in the Lake Washington High School. The typewriter is on display at Kirkland Heritage in the 'School Corner'.

Above photos, The Teacher's Desk is from the original Central School where the present Kirkland City Hall now stands. Not shown in a frame behind the desk is the original flag



with 46 Stars that few over that school. The school desks Connor and Nathan are using from the no longer standing Rose Hill Elementary School near the Kirkland Cosco.

Many young folks have never used a dial telephone or heard a dial tone. That is one of the things for visitors to do, touch and look at items on display at Kirkland Heritage that are not behind or under glass. Nathan and Connor are using telephones to call their mother at home on the phones once used in Kirkland homes or businesses.

KHS Monthly Programs

Programs will return as soon as they can be scheduled. We will continue to follow the current City & State guidelines. This is what we have scheduled to date.



2022

Update to members

Matt McCauley will be directing his popular Cemetery Tour in 2022...Covid permitting. It is the goal of the Cemetery Committee to have more graves marked by then.



Kirkland Heritage Society 2022 Membership Dues Notice

2022 membership covers January through December and are due in January. The dues help support the Society with the operation of the Research Center and Museum, the printing and mailing of the *Blackberry Preserves*, newsletter, the purchasing of historic pictures plus normal operations of the society.

Even though we have not been able to have our membership meetings in 2021 we have been open to the public when allowed by CDC, State, County, and City guidelines. Operating expenses continue to be covered and in some cases they rise. Membership dues and other donations are a great help at this time.

A dues letter will be sent out in January of 2022.



Loita Hawkinson who normally edits the *Blackberry Preserves* is ill. She is doing fine but will take some time to recover and back behind the desk at the Research Center. Any best wishes may be sent to her via me at the Research Center. *Frank Rosin*

Kirkland Heritage Society office and museum is now open

Monday from 10 to noon
Wednesday from 2 to 5



Programs

Karen would like suggestions for future programs:

Karen Schickling @ 425-273-6299 or
kschic1965@gmail.com.



AmazonSmile

Kirkland Heritage is registered with AmazonSmile.

When you purchase from Amazon, .5% of your total purchase can be donated to KHS. Amazon pays this .5%, not the buyer. The link to our AmazonSmile account is on our website @

www.kirklandheritage.org

.5% may not seem like much but every penny helps support Kirkland's history.

Blackberry Preserves

President:	Frank Rosín	425.827.3446
Vice-president	Chris Neir	425.827.3446
Secretary:	Janice Gerrish	425.827.3446
Treasurer:	Loita Hawkinson	425.827.3446
At-Large	Linda Jatón	425.827.3446
At-Large	Vic Newhard	425.892.8388
At-Large	Libbi Wright	425.827.3446
At-Large:	Andrea Kyrála	425.827.3446
At-Large:	Kim Hartman	810.599.1754

Committee Chairs & members

Archives & Collections:	Loita Hawkinson* Libbi Wright	425.827.3446 425.827.3446
Bookkeeping	Andrea Kyrála	425.827.3446
Blackberry Preserves:	Loita Hawkinson Marjorie Denton	425.827.3446
Cemetery Tour & Memorial	Matt McCauley* Sue Contreras Frank Rosín Loita Hawkinson	425.827.3446
Hello Girls**	Linda Jatón* Cathy Radcliff Margie Denton Marilyn Johnson	425.827.3446
Feature Writers	Loita Hawkinson Frank Rosín Guest writers	425.827.3446
Programs:	Karen Schickling	425.827.3446
Time Keepers	Marin Harris* Shannon Harris	425.827.3446
Membership	Bob Gerrish	425.827.3446
Oral History:	Loita Hawkinson	425.827.3446
Planning and Historic Sites:	Kim Hartman* Lynette Weber	810.599.1754 425.890.9058
Scholarship Committee	Jim Neir*	206.478.3173 425.827.3446

* Chair or Co-chairs

** During WWI, the Hello Girls were ladies who served as telephone operators. For KHS, these sweet ladies call and remind you of the next meeting or event.

Webmaster: Christopher Neir

Kirkland Heritage Society

www.kirklandheritage.org

425-827-3446

**KHS is 100% volunteer with no paid staff.
Your memberships make it happen.**



2022 MEMBERSHIP

Kirkland Heritage Society

January 1, 2022 to December 31, 2022

KHS qualifies for tax exemption under 501(c) (3) and your contribution is deductible to the extent allowed by law. We qualify for matching gift contributions by those employers who offer this benefit.

Membership Category

_____ Senior / Student	\$20
_____ Individual	\$25
_____ Family	\$30
_____ Supporting	\$100
_____ Life Member	\$1,000
_____ Organization/Government	\$100
_____ Professional Business	\$125
_____ Corporate	\$250

I would like to make a contribution: _____

TOTAL ENCLOSED:

**If your company matches contributions, please
provide the signed Matching Gift Form!**

Name _____

Address: _____

City: _____ State: _____ Zip: _____

Phone: _____

E-mail: _____

Checks should be made payable and mailed to:

Kirkland Heritage Society
Heritage Hall, Lower Level
203 Market Street
Kirkland, WA 98033.



TO RENT HERITAGE HALL

**Call the City of Kirkland's
Customer Service Division at:
425.587.3300**



Summerfest 2021 on a picture perfect weekend
Frank Rosín, Wayne Jatón and Dave Sherbrooke

Blackberry Preserves is produced by the **Kirkland Heritage Society**, for KHS members and those interested in Kirkland's past. **Loita Hawkinson, Editor.**
For information on KHS - visit our website: www.kirklandheritage.org,
or call 425 827-3446 to leave a message.

**First
Class
Stamp
Box**



Kirkland Heritage Society, est 1977
Heritage Hall
203 Market Street, Lower Level
Kirkland, WA 98033

